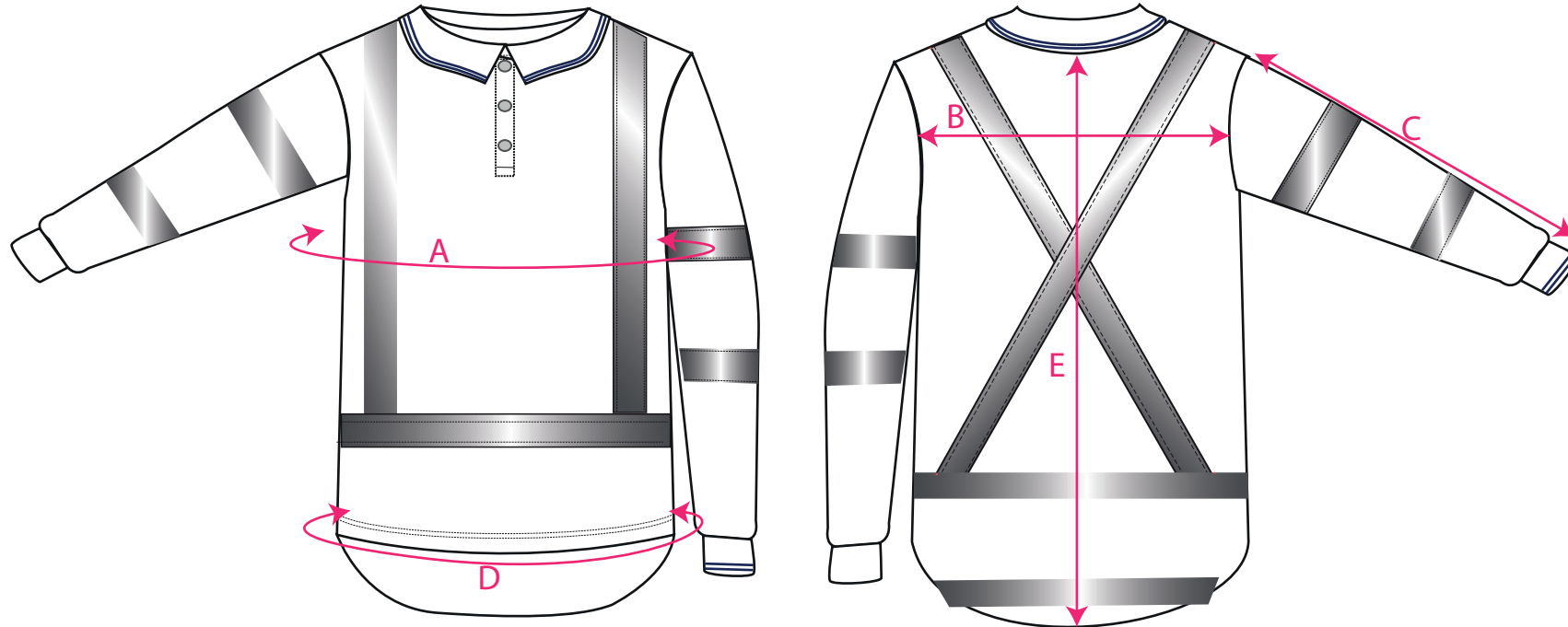


STYLE NO: TM312

DESCRIPTION: **X Back L/S Polo**

FABRIC: 100% polyester birdeye,  
150g/m2

COLOUR: Orange



Area	Measurements in fully relaxed fabric (cm)	XS	S	M	L	XL	XXL	XXXL	4XL	5XL	6XL	7XL	Tol (+)
A	Chest	98	106	114	122	130	138	146	154	162	170	178	1
B	Across Back from (12cm below neck)	46	48	50	52	54	56	58	60	62	64	66	0.5
C	Outside Sleeve (incl. Cuff)	60	61	62	63	64	65	66	67	68	69	70	0.5
D	Hem circumference	98	106	114	122	130	138	146	154	162	170	178	1
E	Centre Back Length	83	83	84	85	86	87	88	89	90	91	92	0.5