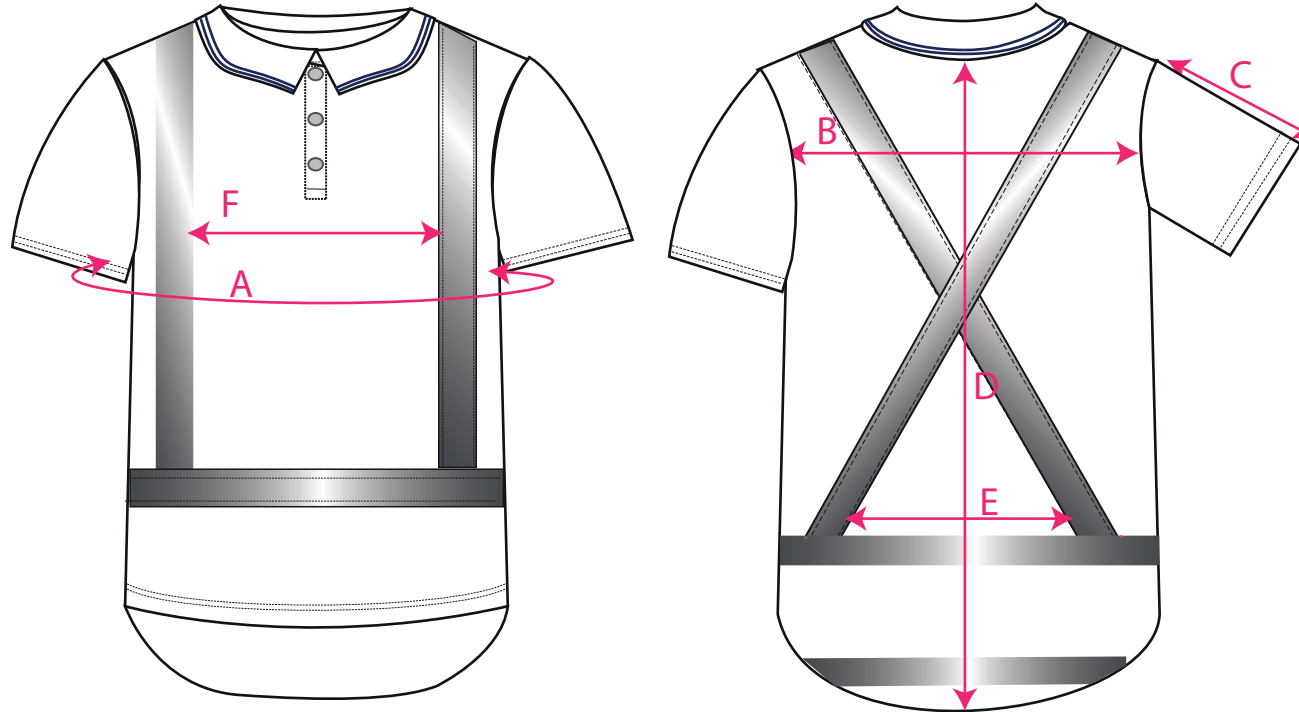


STYLE NO: TM311

DESCRIPTION: **X Back L/S Polo**

FABRIC: 100% polyester birdeye, 150g/m2

COLOUR: Orange



Measurements are for fully relaxed fabric, in cm.		XS	S	M	L	XL	XXL	XXXL	4XL	5XL	6XL	7XL	Tol (+)
		80-88	92-96	100-104	108-112	116-124	128-132	136-140	144-148	152-160	164-172	176-184	
A	Chest	98	106	114	122	130	138	146	154	162	170	178	1
B	Across Back from (12cm below neck)	46	48	50	52	54	56	58	61	64	67	70	0.5
C	Outside Sleeve Length	18.75	19	19.25	19.5	19.75	20	20.25	20.5	20.75	21	21.25	0.5
D	Centre Back Length	83	83	84	85	86	87	88	89	90	91	92	0.5
E	Distance between "X" back	29.5	30.5	31.5	32.5	33.5	34.5	35.5	36.5	37.5	38.5	39.5	0.5
F	Distance between vertical bands of reflective tapes	32	33	34	35	36	37	38	39	40	41	42	0.5