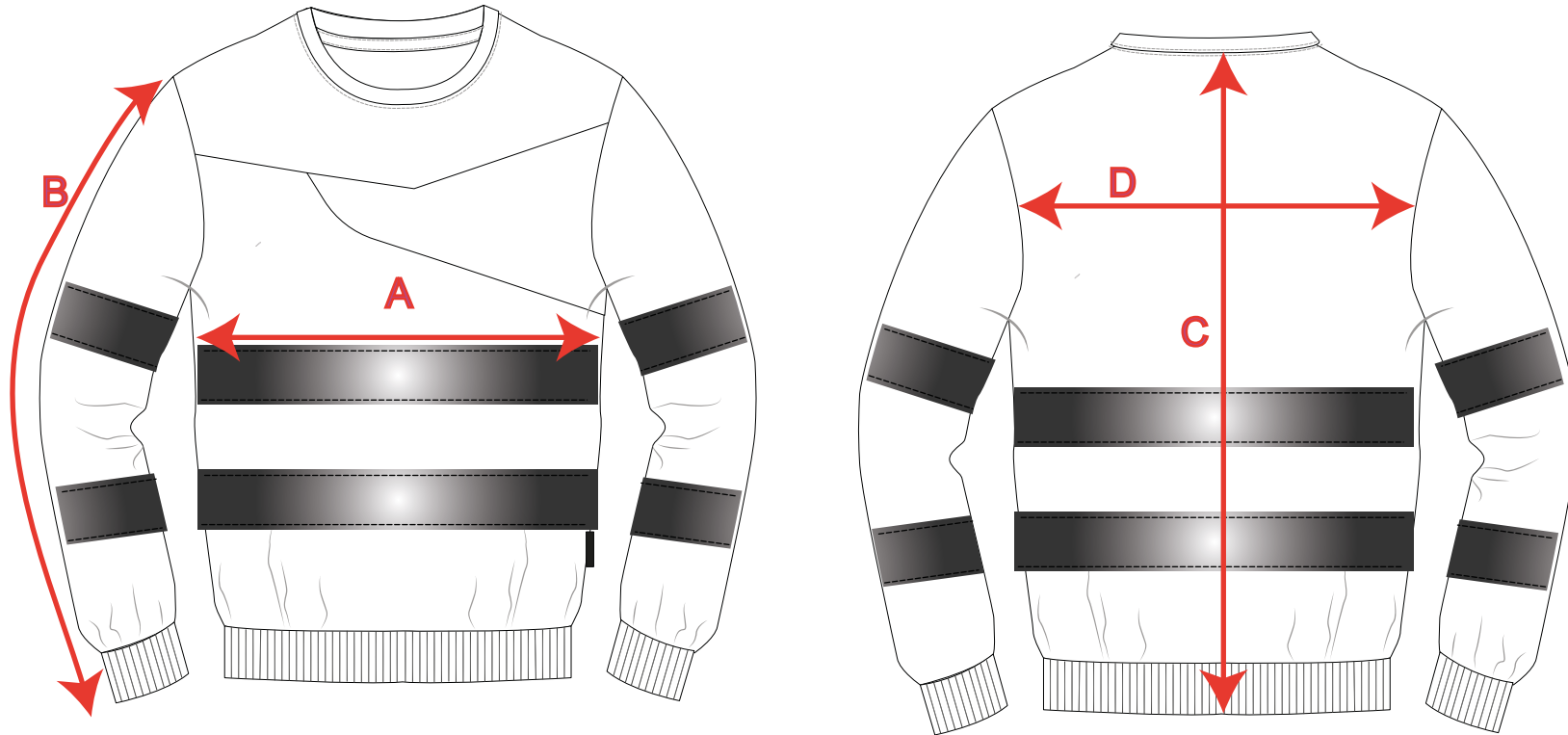


STYLE NO: PW277

DESCRIPTION: PW2 Hi Vis Sweatshirt

FABRIC: 65%Polyester, 35% Cotton.
Weight: 300g/m2

COLOUR: Yellow
Orange



MEASUREMENTS IN CM

AREA	TO FIT	S	M	L	XL	2XL	3XL	4XL
A	CHEST WIDTH (HALF)	53	57	61	65	69	73	77
B	OVERARM SLEEVE LENGTH - CROWN TO HEM	62.5	63.5	64.5	65.5	66.5	67.5	68.5
C	BACK LENGTH AT CB (INC COLL & WAIST)	74	75	76	77	78	79	80
D	ACROSS BACK 12CM DOWN FROM CB	44	46	48	50	52	54	56