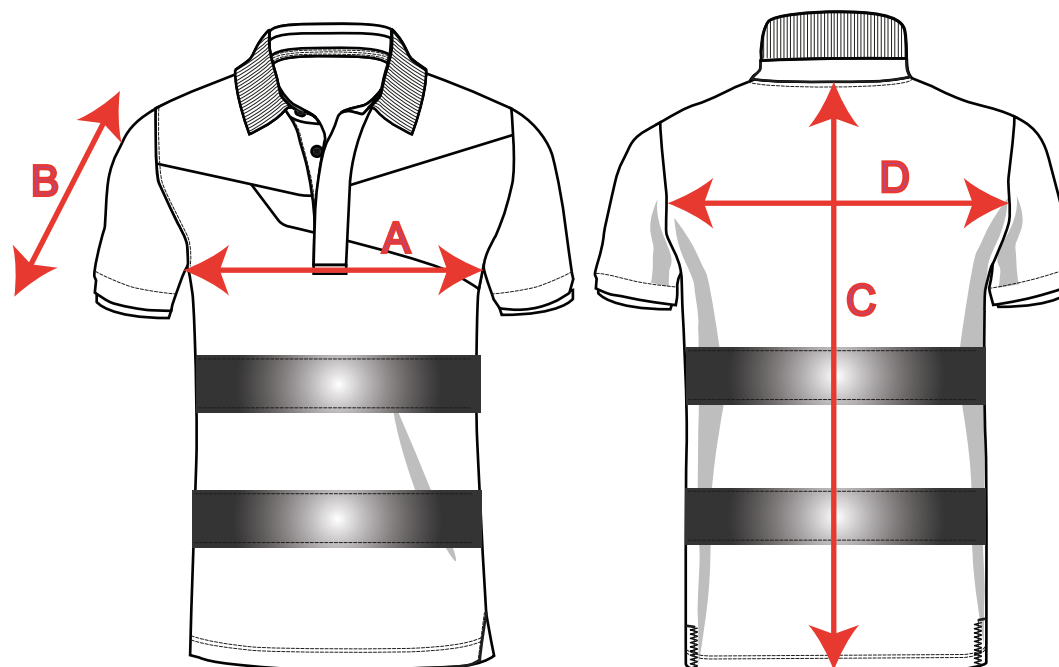


STYLE NO: PW212

DESCRIPTION: PW2 Hi-Vis Poloshirt

FABRIC: 55% Cotton/ 45% Polyester knit
144gsm.

COLOUR: Orange
Yellow



ALL MEASUREMENTS IN CM

AREA	TO FIT	S	M	L	XL	2XL	3XL	4XL
A	CHEST WIDTH (HALF)	50	54	58	64	68	72	76
B	OVERARM SLEEVE LENGTH- CROWN TO HEM	22.5	24	25.5	27	28.5	30	31.5
C	BACK LENGTH AT CB	73	74	75	76	77	78	79
D	ACROSS BACK 12CM DOWN FROM CB	40.2	42	43.8	45.6	48.4	50.2	52