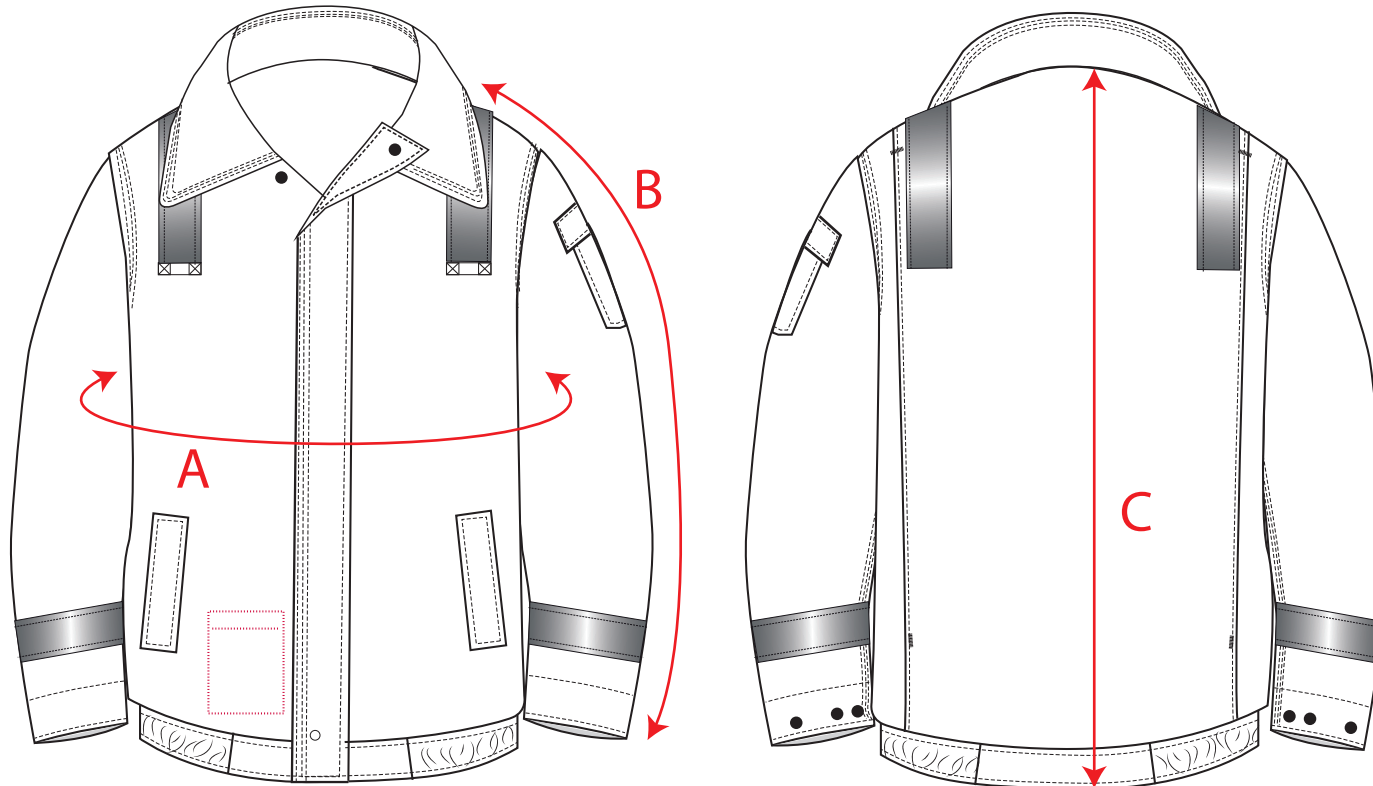


BASE STYLE: FR608

DESCRIPTION: Bizflame Winter Bomber Jacket

FABRIC: 99% cotton / 1% carbon fibres - anti-static grid - FR Woven Cotton Fabric, 210 gsm

COLOUR: Navy, Red, Royal Blue



		MEASUREMENTS					
		S	M	L	XL	2XL	3XL
Jacket Chest	A	118	126	134	142	150	158
Collar to Cuff (incl. Cuff)	B	82	83	84	85	86	87
Centre Back Length (incl Waistband)	C	72	74	74	76	76	76