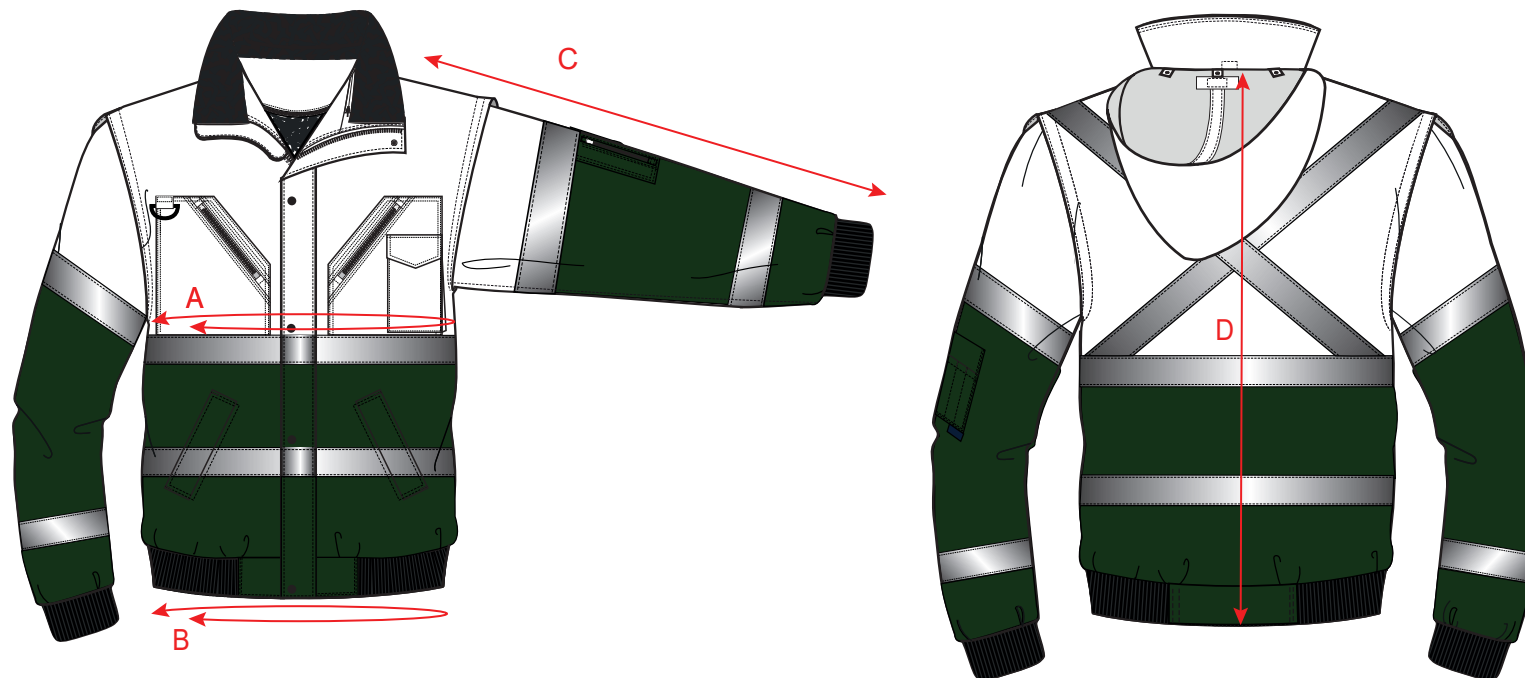


STYLE NO: C565

DESCRIPTION: Hi Vis Bomber Jacket



		Measurements										
		XS	S	M	L	XL	XXL	3XL	4XL	5XL	6XL	ToI
To Fit Chest		80-88	92-96	100-104	108-112	116-124	128-132	136-140	144-148	152-160	164-172	
Euro Sizes		1	2	3	4	5	6	7	8	9	10	
Jacket Chest	A	110	118	126	134	142	150	158	166	178	190	1
Hem Relaxed	B	76	84	92	100	108	116	124	136	148	160	1
Collar to Cuff (incl. Cuff)	C	81	82	83	84	85	86	87	88	89.5	91	1
Centre Back Length (incl Waistband)	D	72	72	74	74	76	76	76	78	78	80	1